

Op. 5007

C Suite

in

Violoncello Solo.

Del Sig. Joh. Seb. Bach.



SUPPL. MUS.
JG 5007

Suite I.
Praeludium

Suite I
Prélude

Handwritten musical score for Suite I, Prélude. The score is written on ten staves, with measure numbers 4, 7, 11, 14', 18, 21', 25, 28', 32', 36, and 39' indicated on the left. The music is in common time (C) and features a complex, flowing melodic line with frequent chromaticism and dynamic markings. The notation includes various note values, rests, and articulation marks. At the end of the piece, there is a double bar line, a fermata, and the number 42. Below the staff, there is a signature and the number 2.

Allemande

Allemande 5/4

3'

7

10'

13'

16'

19'

23

26'

30

Courante.

Courante

6

11'

16

21'

27

32'

37'

Handwritten musical score for Courante, measures 1-37. The score is written on ten staves. The first staff begins with a treble clef, a 3/4 time signature, and a key signature of one sharp (F#). The music consists of a single melodic line with various rhythmic values, including eighth and sixteenth notes, and rests. There are several slurs and accents throughout. Measure numbers 6, 11', 16, 21', 27, 32', and 37' are written on the left side of the staves. A double bar line is present at the end of measure 37.

Sarabande

5'

10

14

Handwritten musical score for Sarabande, measures 1-14. The score is written on four staves. The first staff begins with a treble clef, a 3/4 time signature, and a key signature of one sharp (F#). The music consists of a single melodic line with various rhythmic values, including eighth and sixteenth notes, and rests. There are several slurs and accents throughout. Measure numbers 5', 10, and 14 are written on the left side of the staves. A double bar line is present at the end of measure 14.

Menuetto. 1.

Menuet I

6

12

18

24

Musical notation for Menuet I, measures 1-24. The piece is in 3/4 time and G major. It features a melody in the right hand and a bass line in the left hand. Measure 24 ends with a repeat sign and a first ending bracket labeled '16.'.

Menuet II

5

11

17

22

Musical notation for Menuet II, measures 1-22. The piece is in 3/4 time and G major. It features a melody in the right hand and a bass line in the left hand. Measure 22 ends with a repeat sign and a first ending bracket labeled '16.'. The text 'Menuetto. 1. Da capo.' is written in the right hand at the end of the first ending.

Two empty musical staves at the bottom of the page.

Gigue.

Gigue

5

12

19

25

31

Suite II

Suite 2.

Prélude.

Prélude

5

9

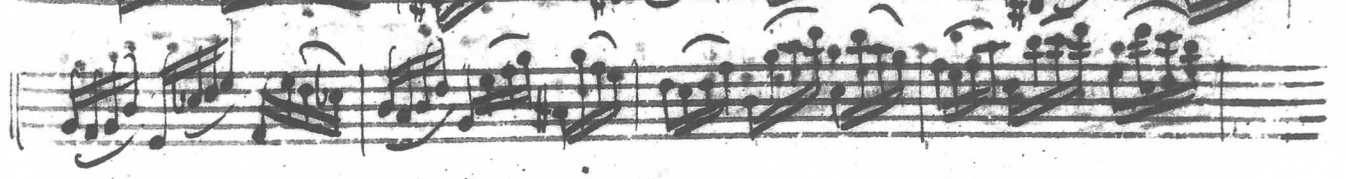
14

18

22



26



30



34'



39



43'



47



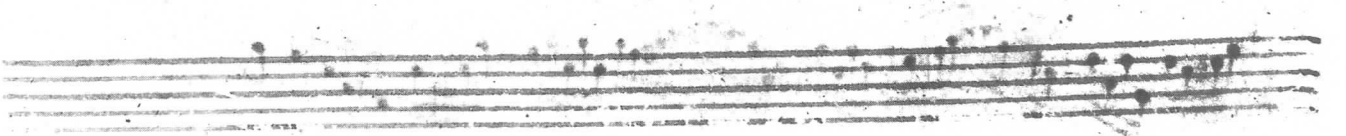
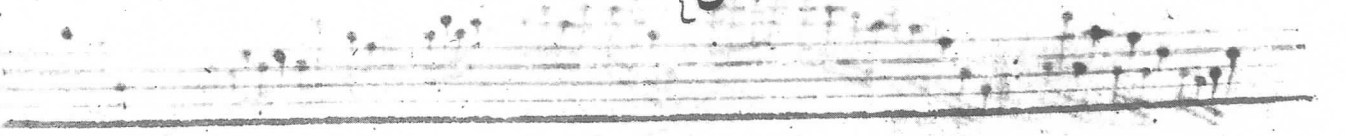
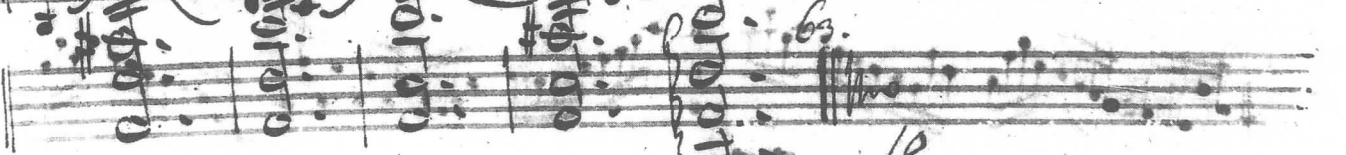
51'



55



59



Allemande.

Allemande

Handwritten musical score for Allemande, measures 1-22. The score is written on a grand staff with two staves per system. The music is in 3/4 time and features a complex, flowing melody with many sixteenth and thirty-second notes. The key signature has one sharp (F#). Measure numbers 3', 6', 9', 12', 15', 19', and 22' are marked on the left side of the page.

Courante

Handwritten musical score for Courante, measures 1-13. The score is written on a grand staff with two staves per system. The music is in 3/4 time and features a more rhythmic and dance-like melody with many sixteenth notes. The key signature has one sharp (F#). Measure numbers 4, 9, and 13' are marked on the left side of the page.

16'

21

26

30

Sarabande

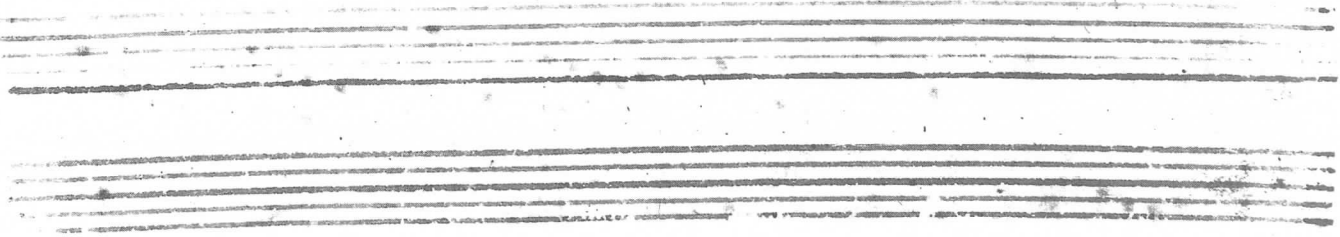
5

11

17

22

26



10.)

Menuetto ^{1^{mo}}

Menuet I

6
12
18

Menuet II

5
11
17
22

Gigue.

Gigue

7

14

21

27

32'

39

46

54

61

68

74

Suite 3.

Suite III
Prélude

The image shows a musical score for the Prélude of Suite III. The score is written on ten staves. The first staff begins with the word "Prélude" in a decorative script, followed by a treble clef, a key signature of one sharp (F#), and a 3/4 time signature. The music consists of a continuous melodic line with various rhythmic patterns, including eighth and sixteenth notes, and rests. The staves are numbered on the left side: 4', 8', 13, 17, 21, 25, 29, 33, 37, 41, and 45. The notation includes slurs, ties, and dynamic markings such as *mf* and *f*. The piece concludes with a double bar line and repeat dots at the end of the final staff.

49 *5/4*

53

57

61

65

69

73

77

83

87

147

Allemande

Allemande

A handwritten musical score for a piece titled "Allemande". The score is written on ten staves, with measure numbers 1, 3, 5, 8, 10, 12, 14, 17, 19, 21, and 23 marked on the left side. The music is in a single system, likely for a lute or guitar, as indicated by the 5/4 time signature and the use of a treble clef. The notation includes various rhythmic values, accidentals, and articulation marks such as slurs and trills. The piece concludes with a double bar line and a final cadence. At the bottom right of the page, there are handwritten annotations: a circled "12" above a "mo" and a "10" below it.

Courante.

Courante

Handwritten musical score for a piece titled "Courante". The score is written on ten staves. The first staff begins with a treble clef, a key signature of one sharp (F#), and a 3/4 time signature. The music consists of a single melodic line with various rhythmic values, including eighth and sixteenth notes, and rests. The piece concludes with a double bar line and a final cadence. Measure numbers 7, 13, 20, 27, 34, 40, 48, 56, 65, 73, and 81 are indicated on the left side of the staves. A handwritten number "40" is visible above the 40th measure. The notation includes slurs, ties, and dynamic markings such as "f" (forte).

Sarabande

Sarabande

Musical notation for the Sarabande section, measures 1 through 18. The piece is in 3/4 time and G major. The notation includes a treble clef, a key signature of one sharp (F#), and a 3/4 time signature. The melody is characterized by a slow, graceful pace with frequent grace notes and slurs. The bass line provides a steady accompaniment with a mix of eighth and sixteenth notes.

5

9

13

18

23

Bourrée I

Bourrée I

Musical notation for the Bourrée I section, measures 1 through 25. The piece is in common time (C) and G major. The notation includes a treble clef, a key signature of one sharp (F#), and a common time signature. The melody is more rhythmic and lively than the Sarabande, featuring a mix of eighth and sixteenth notes. The bass line is active, often playing eighth-note patterns. The piece concludes with a double bar line and a fermata.

4'

10

15

20

25

Bourrée Zelo

Bourrée II

Musical notation for Bourrée II, measures 1-22. The piece is in 3/8 time and G major. It features a lively melody with eighth and sixteenth notes. Measure 22 includes the instruction "Da capo Bourrée I." with a double bar line and repeat sign.

Gigue

Musical notation for Gigue, measures 1-48. The piece is in 3/8 time and G major. It features a lively melody with eighth and sixteenth notes. Measure 48 includes the instruction "V. S." with a double bar line and repeat sign.

48'

56

68

77

85

92

101

Bo.
Mo

Suite IV
Prélude

Suite A

Prélude

4'

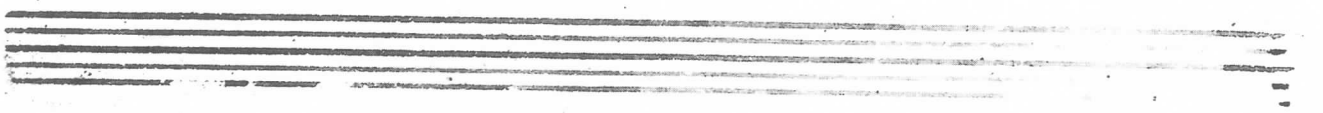
9'

14

Handwritten musical score on eight staves. The staves are numbered on the left side: 18', 22, 26, 30, 34, 38, 42, and 46. The notation includes various musical symbols such as notes, rests, and accidentals. The first staff begins with a treble clef and a key signature of one flat (B-flat). The music is written in a cursive, handwritten style.

Four empty musical staves at the bottom of the page. The initials "V.S." are written in the upper right corner of this section.

Handwritten musical score consisting of ten staves, numbered 49 to 90. The notation is dense and includes various musical elements such as notes, rests, and ornaments. A large slur covers the first staff (49). The notation includes various notes, rests, and ornaments like trills and grace notes. The key signature has one flat (B-flat). The score ends with a double bar line and the number 91. Below the final staff, the number 78 is written.



Allemande.

Allemande

Handwritten musical score for Allemande, measures 1-30. The score is written on ten staves. The first staff begins with a treble clef, a key signature of one flat (B-flat), and a common time signature (C). The music is written in a cursive, handwritten style. Measure numbers are indicated on the left side of the staves: 1, 3', 7, 10', 14, 17', 21, 24', 28, 32, 35', and 39. A double bar line is present at the end of measure 30. The notation includes various rhythmic values, accidentals, and phrasing slurs.

Courante

Courante

Handwritten musical score for a piece titled "Courante". The score is written on ten staves, with measure numbers 1, 6, 12, 19, 25, 31, 38, 44, 49, 54, and 59 marked on the left. The music is in 3/4 time and features a complex, rhythmic melody with many sixteenth and thirty-second notes. The key signature has one flat (B-flat). The notation includes various ornaments, slurs, and dynamic markings. At the end of the piece, there is a double bar line, a key signature change to two flats (B-flat and E-flat), and a time signature change to 3/2. The final measure is marked with a circled "38" and a "3/2" time signature.

Sarabande

Sarabande

6

11

16

21

27

32

Bourrée I

3

7

11

Handwritten musical score for Sarabande. The piece is in 3/4 time and B-flat major. The notation includes treble and bass staves with various notes, rests, and ornaments. Measure numbers 6, 11, 16, 21, 27, and 32 are indicated on the left. A double bar line with a repeat sign is present at measure 12. The score ends with a fermata at measure 32.

Handwritten musical score for Bourrée I. The piece is in 3/4 time and B-flat major. The notation includes treble and bass staves with various notes, rests, and ornaments. Measure numbers 3, 7, and 11 are indicated on the left. The score ends with a fermata at measure 11.

V.S

12'

16

20

26

30'

34'

39

43

47

4'

10

This image shows a handwritten musical score for a piece titled "Bourrée II". The score is written on ten staves. The first nine staves are numbered on the left margin as 12', 16, 20, 26, 30', 34', 39, 43, and 47. The tenth staff is numbered 4' and 10. The music is written in a single system with a treble clef and a key signature of one flat (B-flat). The notation includes various rhythmic values, slurs, and dynamic markings such as *pp* and *for*. There are also some handwritten annotations, including the word "Bourrée" written across the bottom of the first staff, and some circled numbers like 36 and 34. The handwriting is fluid and characteristic of a composer's draft.

Bourrée II

Gigue

Gigue

Handwritten musical score for a piece titled "Gigue". The score is written on ten staves, with measure numbers 4, 8, 12, 16, 20, 24, 28, 32, 36, and 40 marked on the left side. The music is in a 3/8 time signature and features a complex, rhythmic melody with many sixteenth and thirty-second notes. The notation includes various ornaments, slurs, and dynamic markings. The piece concludes with a double bar line and a final cadence at measure 40. There are some handwritten annotations and corrections in the final measures, including a circled measure 32 and a large flourish at the end.

Suite 5. Discordable

Suite V

Prélude

Accordist

Prélude

2'

7

11

14'

18'

22'

25'

30

38

45

53

60



66



76



85



93



101



109



117



125



132



140



147



155



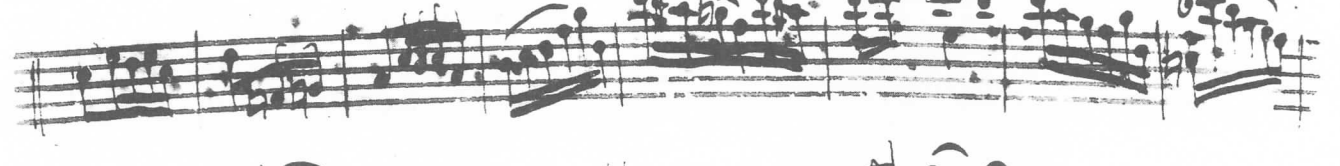
162



169



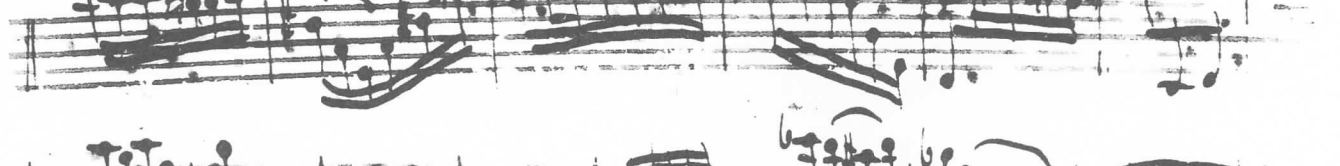
177



185



192



198



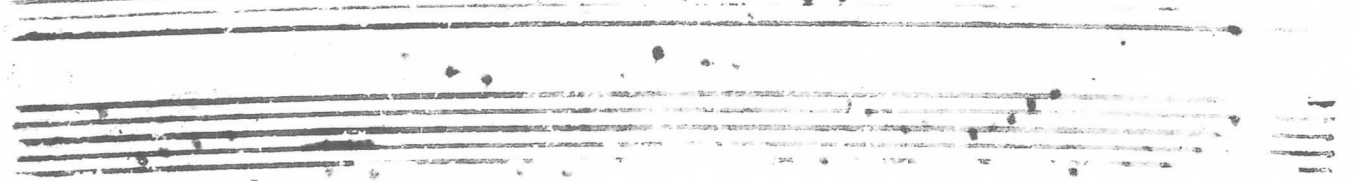
206



212



218



Allemande

Allemande

3'

6'

10

13'

16'

19'

22'

26

29'

32

35

Courante.

Courante

Handwritten musical score for Courante, measures 1-22. The score is written on a grand staff with a treble clef and a 3/2 time signature. The key signature has two flats (B-flat and E-flat). The notation includes various rhythmic values, accidentals, and dynamic markings. Measure numbers 4, 8, 11', 15, 19, and 22' are indicated on the left side of the staves. The piece concludes with a double bar line and a fermata over the final notes.

Sarabande

Sarabande

Handwritten musical score for Sarabande, measures 1-15. The score is written on a grand staff with a treble clef and a 3/4 time signature. The key signature has two flats (B-flat and E-flat). The notation includes various rhythmic values, accidentals, and dynamic markings. Measure numbers 6, 11, and 15 are indicated on the left side of the staves. The piece concludes with a double bar line and a fermata over the final notes.

Gavotte 1.

Gavotte I

Handwritten musical score for Gavotte 1, measures 1-35. The score is written on ten staves. The first staff is the treble clef with a common time signature. The second staff is the bass clef. The music is in 6/8 time. The key signature has one flat (B-flat). The score includes various musical notations such as notes, rests, and accidentals. Measure numbers 4, 9, 13, 17, 22, 26, 30, and 35 are indicated on the left side of the staves. A double bar line is present at the end of measure 35.

Gavotto 2

Gavotte II

Handwritten musical score for Gavotto 2, measures 1-3. The score is written on two staves. The first staff is the treble clef with a common time signature. The second staff is the bass clef. The music is in 6/8 time. The key signature has one flat (B-flat). The score includes various musical notations such as notes, rests, and accidentals. Measure numbers 3 and 4 are indicated on the left side of the staves. A double bar line is present at the end of measure 3.

4'
8
12'
16'

20'

Gigue

8

19

29

40

52

63

Suite 6.

Cinque cordes

Suite VI

Prélude

Prélude

$\frac{12}{8}$

3

6'

10

13'

17

20

23'

26'

29'

32'

36

Handwritten musical score for Suite 6, Cinque cordes, Prélude. The score consists of 12 staves of music in 12/8 time, starting with a treble clef and a key signature of one sharp (F#). The music features various rhythmic patterns, including eighth and sixteenth notes, and rests. Dynamics markings such as 'p' (piano) and 'f' (forte) are used throughout. The score ends with a double bar line and a fermata on the final note. The page number '48' is written in the bottom right corner.

39

42'

46

50

53

56

60

64

67

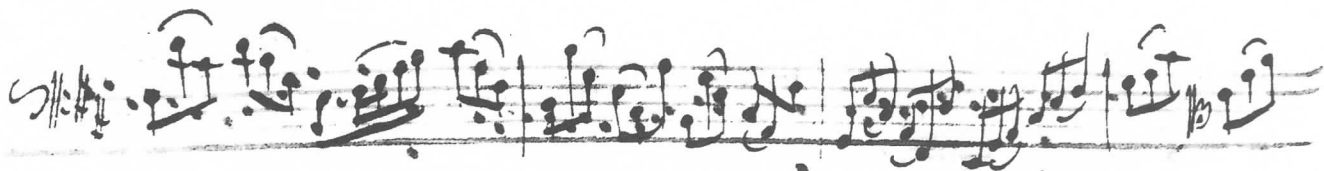
70'

74

77'

A page of handwritten musical notation consisting of ten staves. The notation includes various note values (quarter, eighth, sixteenth notes), rests, and dynamic markings such as *p* (piano) and *f* (forte). The music is written in a single system across the staves. The page is numbered on the left margin with measures 39, 42', 46, 50, 53, 56, 60, 64, 67, 70', 74, and 77'. At the bottom right corner, the number 50 is written.

80



83'



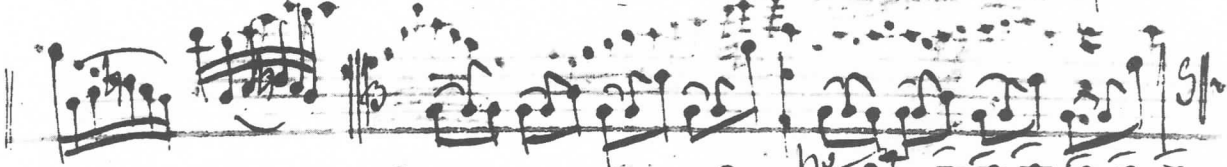
85'



87'



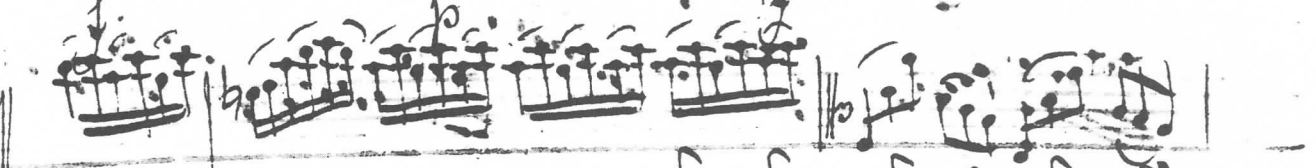
89'



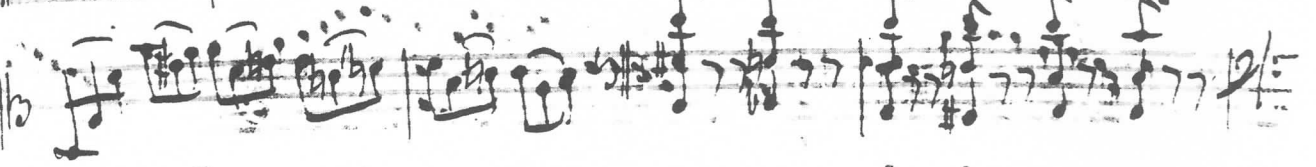
92



94'



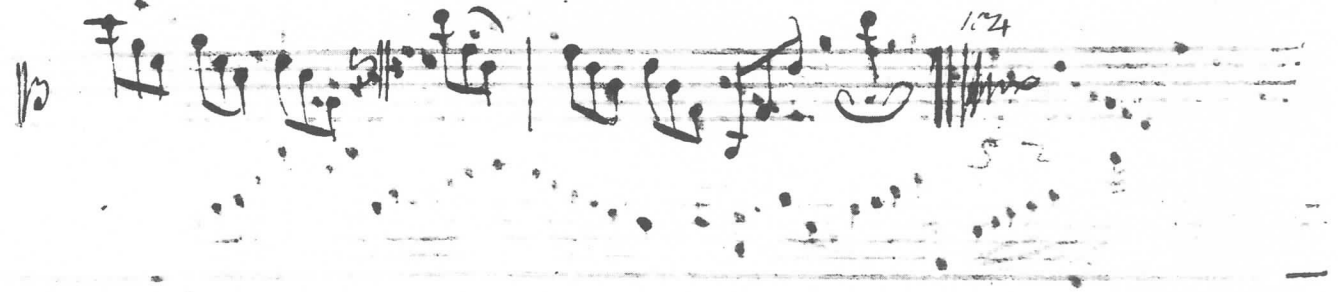
97



100



103



*Allemande.
molt Adagio.*

Allemande

*12.
10
5*

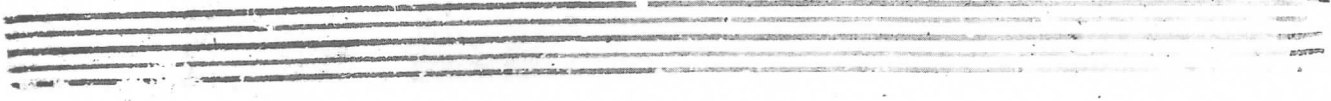
Courante.

Courante

Handwritten musical score for 'Courante'. The score is written on ten staves. The first staff begins with a treble clef, a key signature of one sharp (F#), and a 3/4 time signature. The music is written in a cursive, handwritten style. The staves are numbered on the left side: 4, 9, 13', 17, 20, 24, and 28. The notation includes various rhythmic values, accidentals, and phrasing slurs. The piece concludes with a double bar line on the 28th staff, followed by a handwritten signature 'V.S.' in the bottom right corner.

V.S.

Handwritten musical score on ten staves. The staves are numbered on the left margin: 28', 33, 37, 41, 45, 50, 54, 58, 62, 66, and 70. The notation includes various musical symbols such as clefs, time signatures, notes, rests, and dynamic markings. The key signature changes from one sharp (F#) to one flat (Bb) and back to one sharp (F#). The piece concludes with a double bar line and a fermata on the final note, with the number '44.' written above it. Below the final staff, the numbers '56' are written.



Sarabande.

Sarabande

Handwritten musical score for Sarabande, measures 1-32. The score is written on ten staves. The first staff shows the key signature (one sharp, F#) and the time signature (3/2). The music is in a slow, lyrical style characteristic of a sarabande. The notation includes various note values, rests, and dynamic markings. The piece concludes with a double bar line and a fermata over the final note.

Measures 1, 4, 8, 12, 16, 21, 25, 29, 32 are marked on the left side of the staves.

Gavotte 1.

Gavotte I

Handwritten musical score for Gavotte I, measures 1-27. The score is written on seven staves. The first staff begins with a treble clef, a key signature of one sharp (F#), and a common time signature (C). The music consists of a single melodic line. Measure numbers 4, 8, 13, 18, 23, and 27 are indicated on the left side of the staves. The notation includes various rhythmic values such as eighth and sixteenth notes, rests, and dynamic markings like 'p' and 'f'. There are some handwritten annotations and corrections throughout the score.

Gavotte 2.

Gavotte II

Handwritten musical score for Gavotte II, measures 1-19. The score is written on four staves. The first staff begins with a treble clef, a key signature of one sharp (F#), and a 2/4 time signature. The music consists of a single melodic line. Measure numbers 6, 12, and 19 are indicated on the left side of the staves. The notation includes various rhythmic values such as eighth and sixteenth notes, rests, and dynamic markings like 'p' and 'f'. There are some handwritten annotations and corrections throughout the score. At the bottom of the page, there is a handwritten note: "58 Gavotte 1^m".

Gigue

Gigue

5

10

14

18

22

25'

28

A handwritten musical score for a piece titled "Gigue". The score is written on ten staves. The first staff begins with a treble clef, a key signature of one sharp (F#), and a 6/8 time signature. The word "Gigue" is written in cursive above the first staff. The music consists of a single melodic line. The score is divided into measures, with measure numbers 5, 10, 14, 18, 22, 25', and 28 marked on the left side. The notation includes various rhythmic values such as eighth and sixteenth notes, rests, and slurs. There are some corrections and markings throughout, including a double bar line at measure 14 and a measure number "25" written above a note in measure 28. The handwriting is fluid and characteristic of a composer's sketch.

V.S.

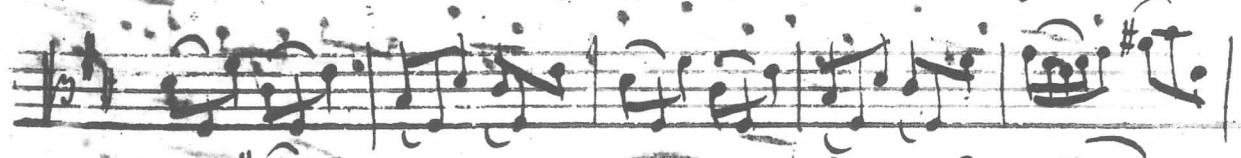
28'



33



37



42



46



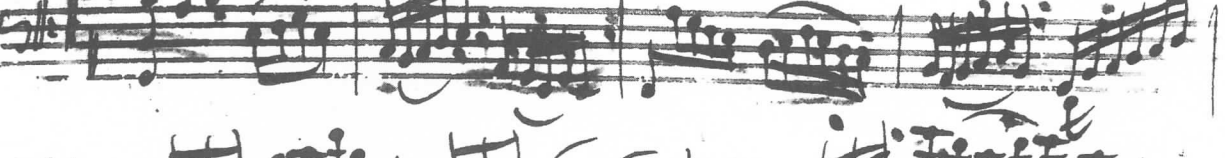
49'



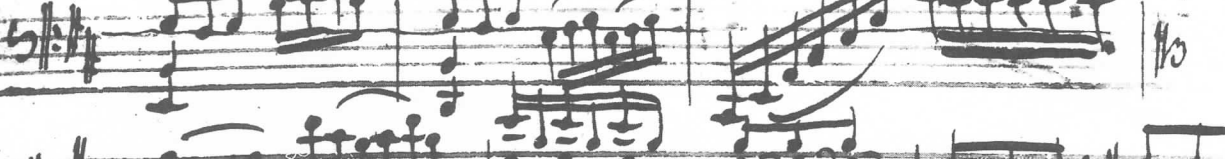
53



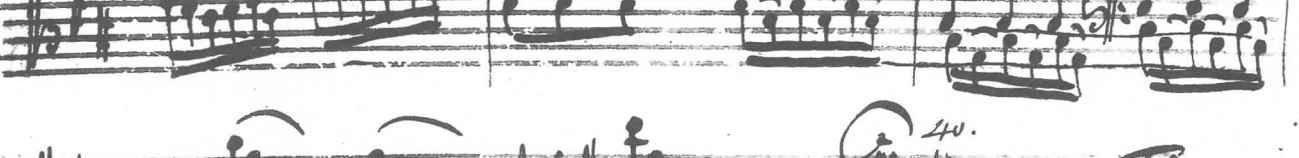
57



61



64



67

